

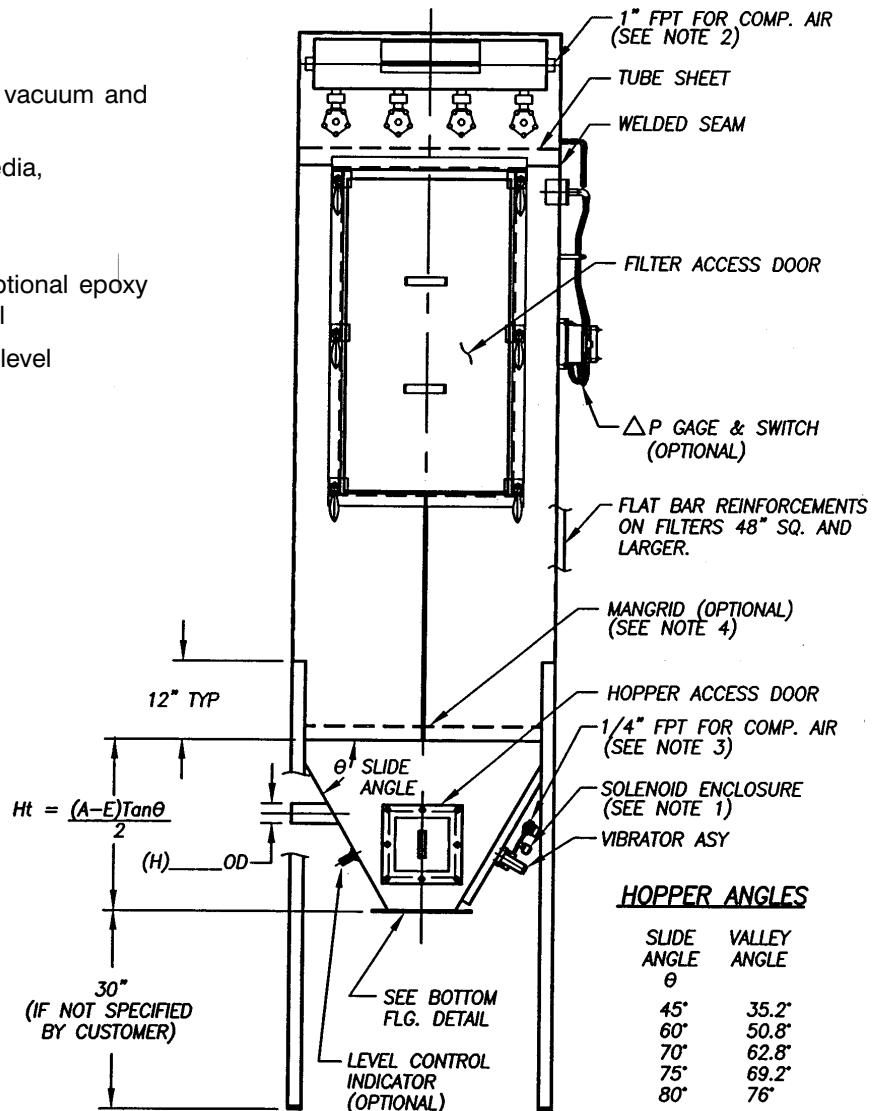
3 – FILTER & BAG HOUSE COMPONENTS

Square Filter Receivers for Pneumatic Conveying Applications (page 1 of 2)

PRODUCT FEATURES – SQUARE FILTER RECEIVERS

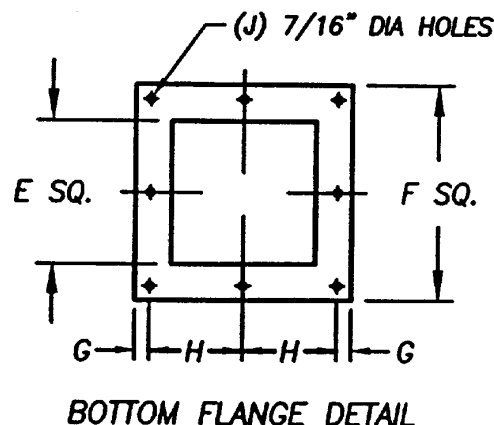
- Designed for operation between 12" water vacuum and 12" water pressure
- Available from 42 to 760 square feet filter media, 9 to 49 bags
- NEMA 4, 7, and 9 electricals available
- Carbon steel construction standard with optional epoxy coated product contact or 304 stainless steel
- Options include bird screen, Delta P gauge, level indicator, switch and mangrid

Filter Model #	Filter Area (Sq. Ft.)	No. of Bags	Bag Length	Comp. Air (SCFM)
36FR9	42	9	36"	4.5
48FR9	56		48"	4.5
60FR9	70		60"	6.5
72FR9	84		72"	6.5
84FR9	98		84"	6.5
36FR16	75	16	36"	5.5
48FR16	100		48"	5.5
60FR16	125		60"	8.5
72FR16	150		72"	8.5
84FR16	175		84"	8.5
36FR25	115	25	36"	6.5
48FR25	155		48"	6.5
60FR25	195		60"	10.5
72FR25	230		72"	10.5
84FR25	270		84"	10.5
96FR25	310	36	96"	10.5
120FR25	390		120"	10.5
36FR36	168		36"	8.5
48FR36	226		48"	8.5
60FR36	280		60"	13.0
72FR36	336	49	72"	13.0
84FR36	394		84"	13.0
96FR36	452		96"	13.0
120FR36	560		120"	13.0
36FR49	230		36"	10.0
48FR49	307	48"	10.0	
60FR49	380	60"	15.0	
72FR49	460	72"	15.0	
84FR49	537	84"	15.0	
96FR49	615	96"	15.0	
120FR49	760	120"	15.0	



HOPPER ANGLES

SLIDE ANGLE θ	VALLEY ANGLE
45°	35.2°
60°	50.8°
70°	62.8°
75°	69.2°
80°	76°

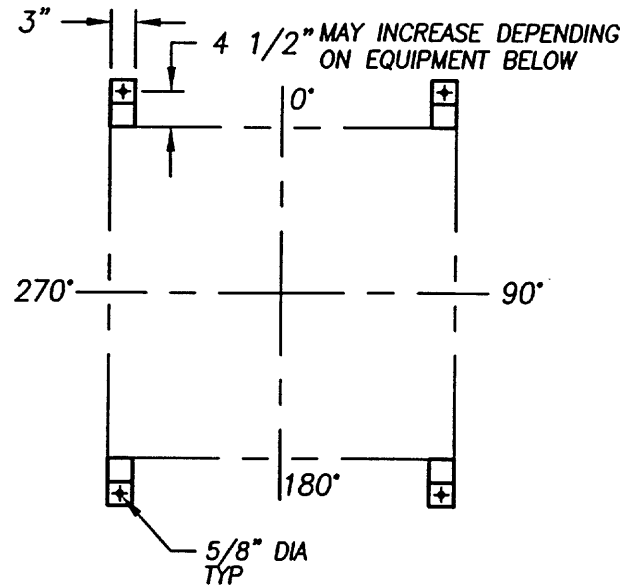
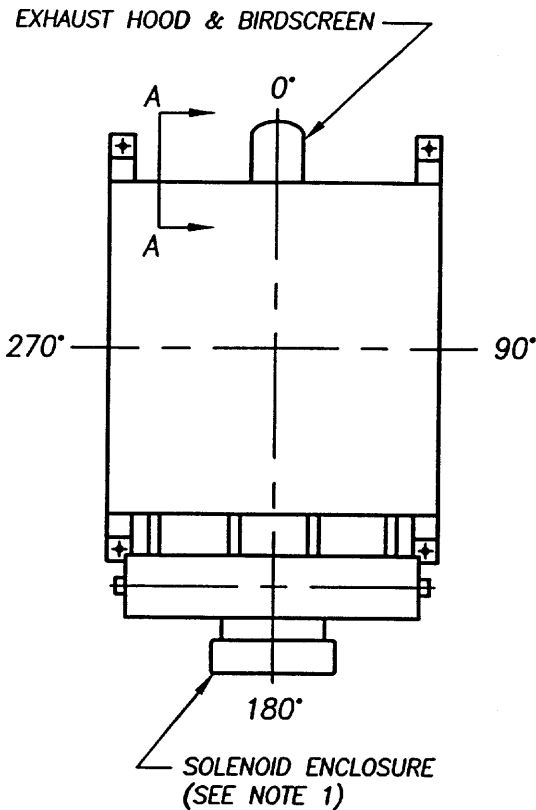


THE PNEU-SERVICE CENTER™

For Ordering and Pricing Information, Call Toll Free 1-888-351-8100.

3 - FILTER & BAG HOUSE COMPONENTS

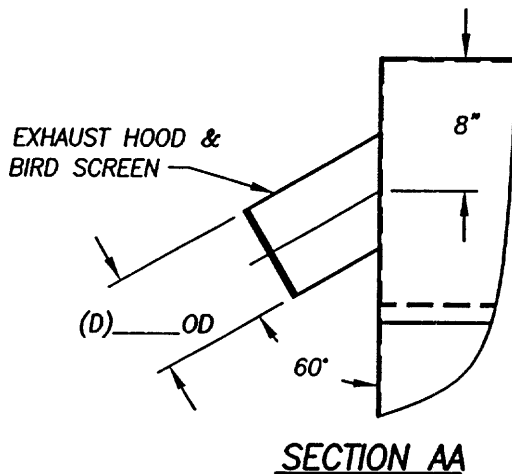
Square Filter Receivers for Pneumatic Conveying Applications (page 2 of 2)



BASE PAD LAYOUT

DISCHARGE FLANGE DIMENSIONS

AIRLOCK FEEDER SIZE	DIMENSIONS				
	E	F	G	H	J
FT-7	6	11	3/4	4 3/4	8
FT-9	8	12	3/4	5 1/4	8
FT-11	9	13	3/4	5 3/4	8
FT-12	10	15	1	6 1/2	8
FT-14	12	17	5/8	5 1/4	12
FT-16	13	18	3/4	5 1/2	12
FT-18	15	20	1	6	12
FT-22	16	22	1	5	16



NOTES

① Filter electrical controls in enclosure (not shown) will be shipped loose and must be mounted by whomever is performing electrical installation.

1-60-110 power must be run to filter controls from a main control panel and from filter controls to the solenoid valves on the filter.

In some cases, it may prove advantageous to remove the electrical controls (but not solenoids) from its enclosure and place them in the main control panel.

② 1-60-110 power must be run to vibrator or air jet controls from a main control panel.

③ 80-100 psi clean, dry plant air required.

THE PNEU-SERVICE CENTER™

For Ordering and Pricing Information, Call Toll Free 1-888-351-8100.