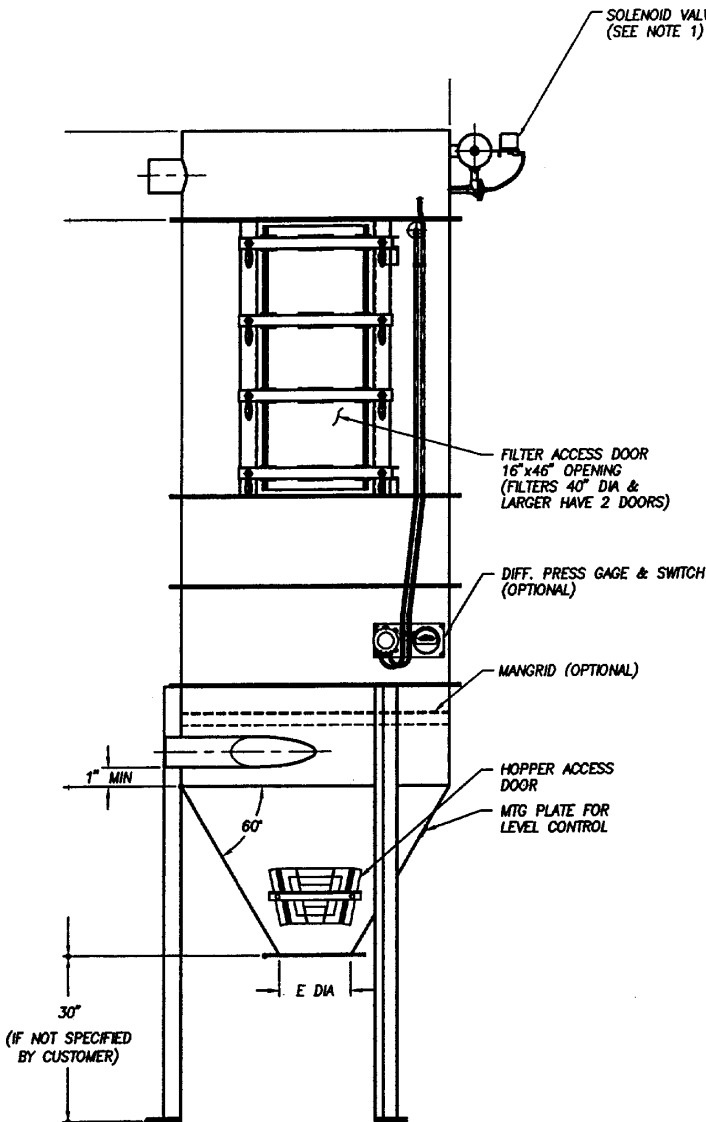
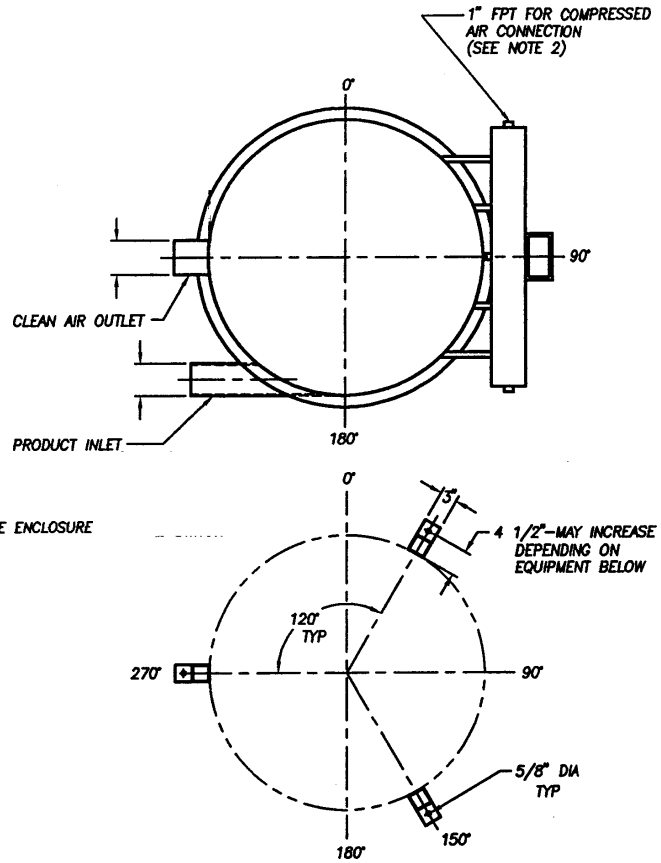


3 - FILTER & BAG HOUSE COMPONENTS

Round Filter Receivers for Pneumatic Conveying Applications (page 1 of 2)

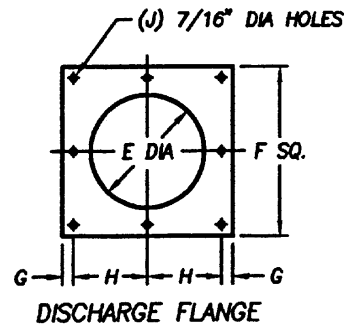
PRODUCT FEATURES - ROUND FILTER RECEIVERS

- Designed for operation between 17" Hg vacuum to 10psig pressure
- Available from 7 to 66 bags, 33 to 1,036 square feet of filter media
- NEMA 4, 7, and 9 electricals available
- Carbon steel construction standard with optional epoxy coated product contact or 304 stainless steel
- Carbon steel construction available with prime only or prime and finish enamel exterior
- Options include Delta P gauge, switch and mangrid



DISCHARGE FLANGE DIMENSIONS

AIRLOCK FEEDER SIZE	DIMENSIONS				
	E	F	G	H	J
FT-7	6	11	3/4	4 3/4	8
FT-9	8	12	3/4	5 1/4	8
FT-11	9	13	3/4	5 3/4	8
FT-12	10	15	1	6 1/2	8
FT-14	12	17	5/8	5 1/4	12
FT-16	13	18	3/4	5 1/2	12
FT-18	15	20	1	6	12
FT-22	16	22	1	5	16



THE PNEU-SERVICE CENTER™

For Ordering and Pricing Information, Call Toll Free 1-888-351-8100.

3 – FILTER & BAG HOUSE COMPONENTS

Round Filter Receivers for Pneumatic Conveying Applications (page 2 of 2)

Filter Model	Filter Area (Sq. Ft.)	No. of Bags	Cage Length	Compressed Air (SCFM)
18FR7	14	7	18	3
36FR7	30		36	3
48FR7	41		48	3.5
60FR7	52		60	3.5
72FR7	63		72	3.5
18FR10	20	10	18	4
36FR10	44		36	4
48FR10	56		48	4.5
60FR10	75		60	4.5
72FR10	90		72	4.5
84FR10	106	14	84	5
36FR14	60		36	5
48FR14	82		48	5.5
60FR14	104		60	5.5
72FR14	126		72	5.5
84FR14	148	19	84	6
36FR19	82		36	6
48FR19	112		48	6
60FR19	142		60	6.5
72FR19	172		72	6.5
84FR19	201	24	84	6.5
96FR19	231		96	6.5
36FR24	104		36	6.5
48FR24	141		48	6.5
60FR24	179		60	6.5
72FR24	217	32	72	6.5
84FR24	254		84	7
96FR24	292		96	7
120FR24	368		120	7
36FR32	138		32	36
48FR32	188	48		7.5
60FR32	239	60		7.5
72FR32	289	72		7.5
84FR32	339	84		8
96FR32	390	121	96	8
120FR32	490		120	8

Filter Model	Filter Area (Sq. Ft.)	No. of Bags	Cage Length	Compressed Air (SCFM)
36FR42	181	42	36	8
48FR42	247		48	8
60FR42	313		60	8
72FR42	379		72	8
84FR42	445		84	8.5
96FR42	511	55	96	8.5
120FR42	643		120	8.5
48FR55	324		48	9
60FR55	410		60	9
72FR55	497		72	9
84FR55	583	61	84	9.5
96FR55	670		96	9.5
120FR55	842		120	10
48FR61	359		48	10.5
60FR61	455		60	10.5
72FR61	551	61	72	10.5
84FR61	647		84	11
96FR61	743		96	11
120FR61	934		120	12
60FR73	545		73	60
72FR73	659	72		13
84FR73	774	84		13.5
96FR73	889	96		13.5
120FR73	1118	120		14
60FR85	634	85	60	14.5
72FR85	768		72	15
84FR85	901		84	15.5
96FR85	1035		96	15.5
120FR85	1302		120	16
72FR104	939	104	72	36.5
84FR104	1103		84	26.5
96FR104	1266		96	26.5
120FR104	1593		120	27
72FR121	1093	121	72	30
84FR121	1283		84	30.5
96FR121	1473		96	30.5
120FR121	1853		120	31

NOTES

① Filter electrical controls in enclosure (not shown) will be shipped loose and must be mounted by whomever is performing electrical installation.

1-60-110 power must be run to filter controls from a main control panel and from filter controls to the solenoid valves on the filter.

In some cases, it may prove advantageous to remove the electrical controls (but not solenoids) from its enclosure and place them in the main control panel.

② 80-100 psi plant air required.

③ Filter designed for 17" Hg vacuum, 10 psi pressure.

THE PNEU-SERVICE CENTER™

For Ordering and Pricing Information, Call Toll Free 1-888-351-8100.